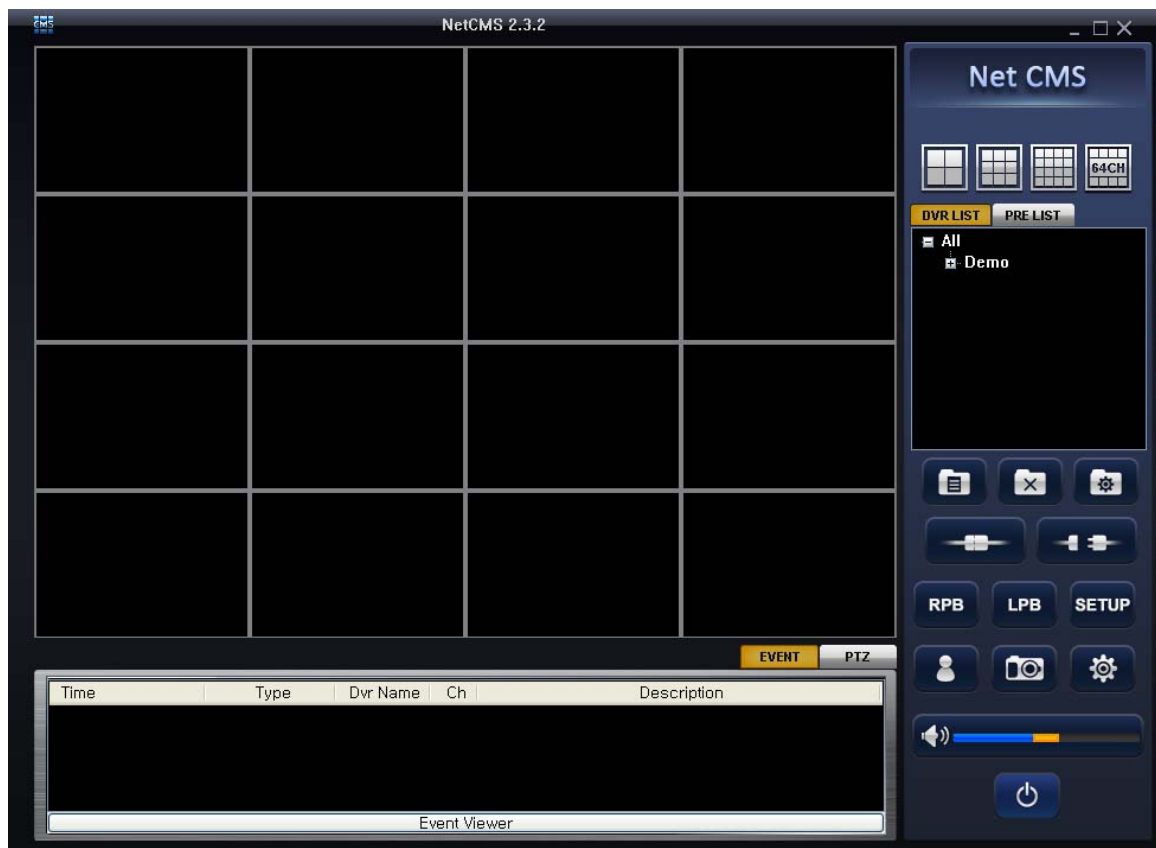


# 1. Central Monitoring System Software



## 1-1. General information

- CMS program is an application with which users not only watch and control remote DVRs, but also receive video/audio data or alarm signals with LAN, WAN environment.
- CMS enables users who care about security to manage full information from all the wire-connected DVRs. All security administrators can control all situations even in emergency with easy operation in their PC.
- Main features of CMS program is as follows,
  - Real time monitoring multi DVRs at the same time
  - Up to 64 camera display on a screen
  - Various screen mode supported. (1, 4, 6, 8, 9, 16, 25, 36, 49, 64 screen mode)
  - Remote controlling DVR setting value / PTZ camera
  - Change configuration values of DVR remotely
- System requirements for PC
  - Operating system : Windows XP / Vista / Windows7
  - CPU : Dual core or Higher
  - Ram : At least 1GB (2GB or higher memory recommended)
  - VGA : 128MB graphic memory or More

## 1-2 Program Installation

1-2-1 Find CMS installing program, and execute it.



1-2-2 After installation, the CMS icon will be created on the desktop.



## 1-3 . Log In

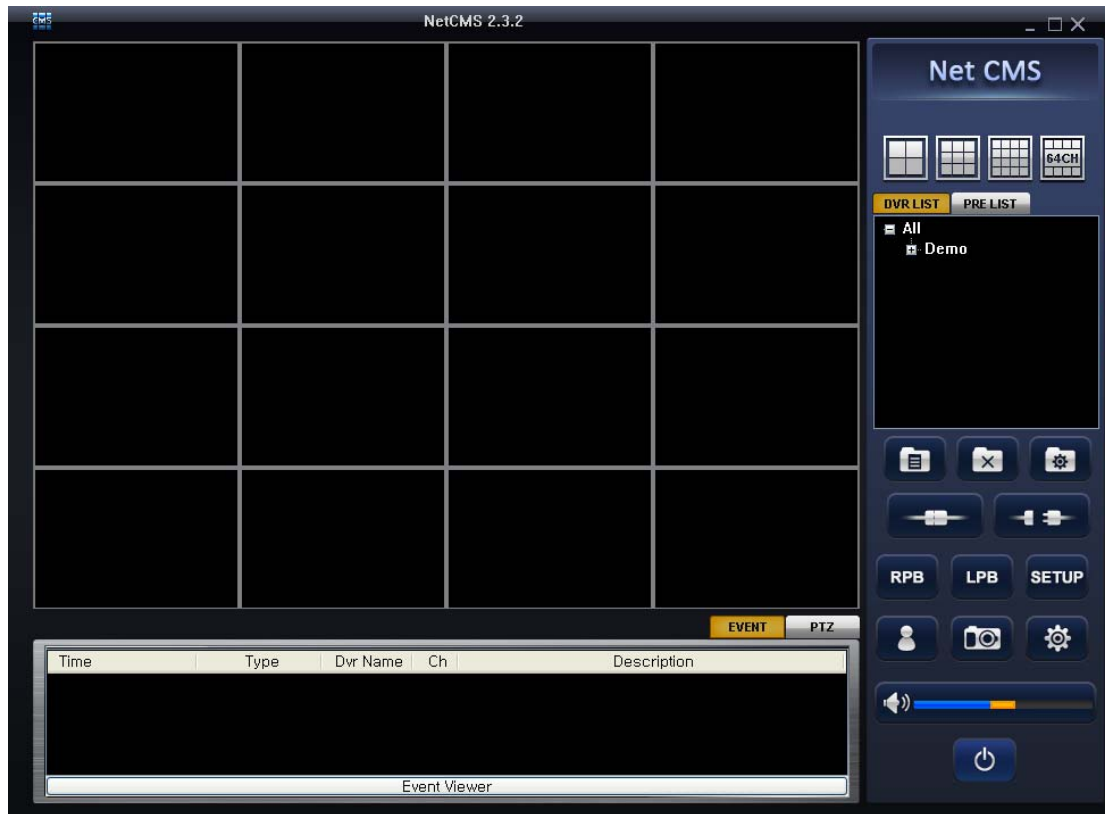
When S/W is executed, Login window will be shown.

Input your ID and password.

\* Default ID : admin , Password : admin.



## 1-4. How to use CMS



### 1-4-1 ICONS IN MAIN MENU

#### 1-4-1-1 Screen division option



S/W displays the channel mode automatically according to channel quantity of connected DVRs.

Also, you can select the channel mode among 4 / 9 / 16 / 64 channel mode.

You can see full screen mode by clicking maximize button



You can see one channel mode by double click

### 1-4-1-2. MAIN ICONS

- 1) ADD : Create Group or DVR site in DVR LIST window / Set prelist info window.
- 2) Delete : Delete created Group or DVR site in DVR LIST window / Delete PRE LIST window.
- 3) Modify : Modify the information of the registered Group or DVR site in DVRLIST window, or cameras in PRELIST window.
- 4) Connect : Connect registered DVR.
- 5) Disconnect : Disconnect the connected DVR.
- 6) RPB : Remote Playback Mode
- 7) LPB : Local Playback Mode
- 8) SETUP : Remote Setup
- 9) User Control : Add Delete User
- 10) Snapshot : Capture the Frame of one channel
- 11) Volume : Control Audio Volume
- 12) POWER : Turn Off the CMS window
- 13) EVENT : Show the status of CMS
- 14) PTZ : Control PTZ camera in one channel mode.





### 1-4-2 DVR LIST

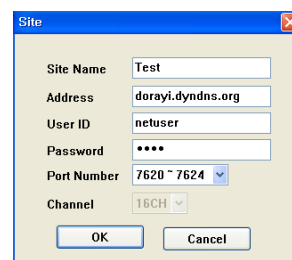
DVR LIST shows the information of the registered DVR in CMS.

To register DVR in CMS, please follow the below steps;

After you input PW in Login window, you can see operating CMS program.

You can make DVR list to connect and all camera of the DVR will be displayed in the connection.

- 1) Please select ALL  and then click ADD  folder ICON.
- 2) Please input Group name, then the group name will be created as tree of ALL.
- 3) Please select the group name and then click add folder ICON again, and then the Site window will pop up.



4) Please input each value in window.

Site Name : Please input DVR site name.

Address : Please input the same IP address as DVR you set up in DVR.[see user's manual page 29]

User ID : Please input the same user name in DVR[see manual page 33.]

Password : please input the same password as that of DVR[see manual page 33.]

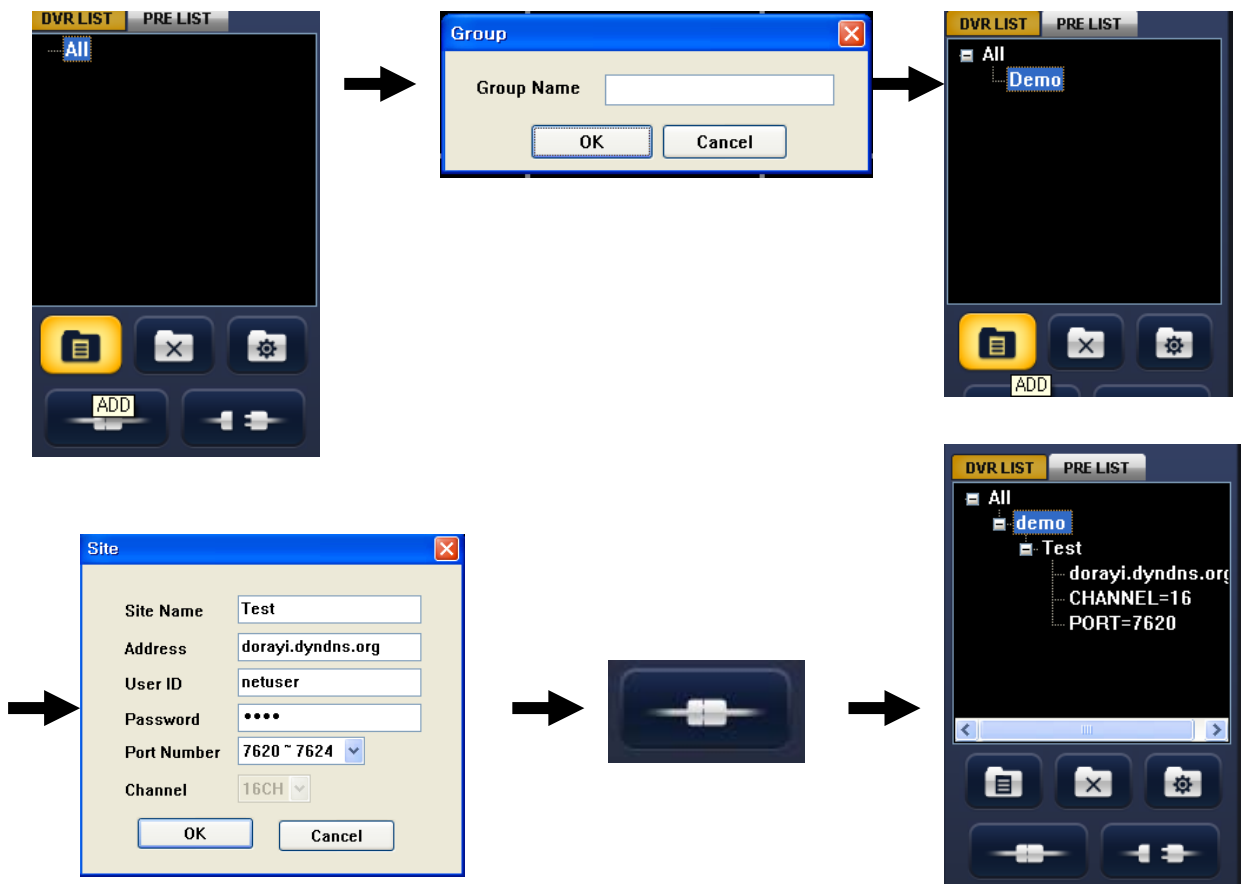
Port Number : please select the same port number in that of DVR[see manual page 31]

The default value is netuser in User ID, and 0000 in password. The Network status in 4.2.7.4.

USER(page 33) should be checked for users to see DVR with CMS.

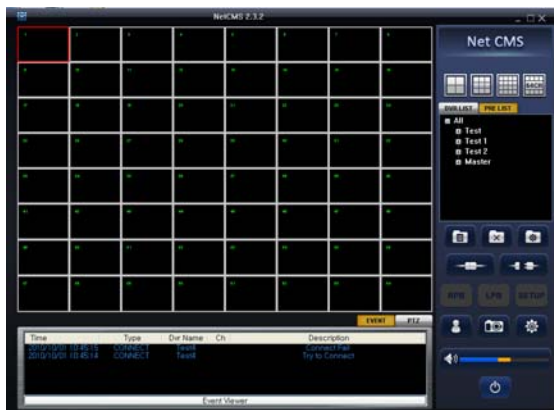
5) Please click OK ICON, and then the status of DVR you selected will be shown in small window.

6) Please click connection ICON, the DVR will be connected.



### 1-4-3. PRE LIST

It is the function to make the list to display the channel from more than one DVR.



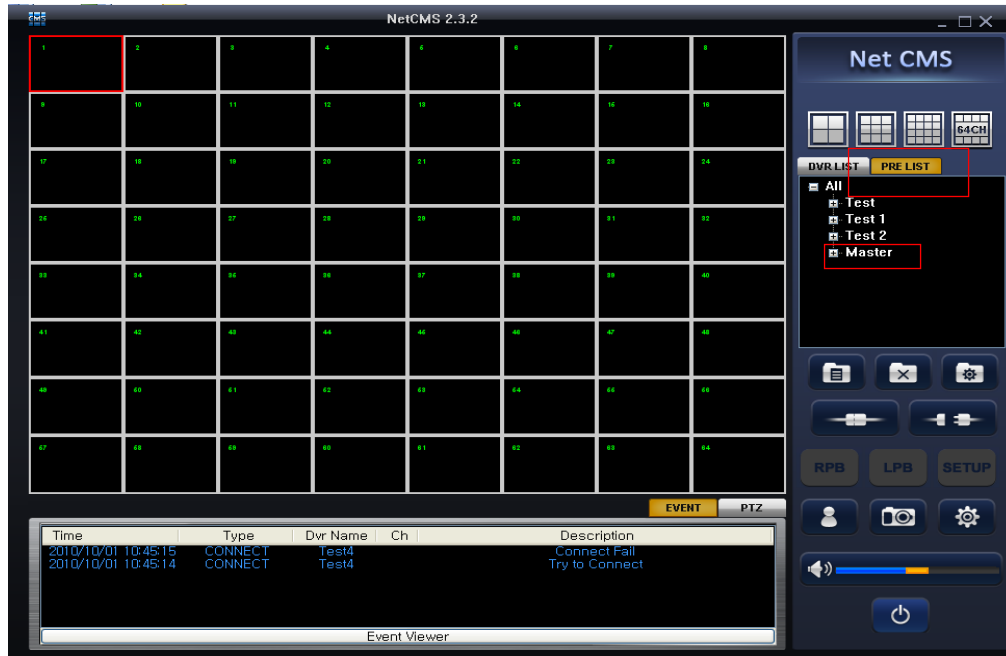
You can save the camera list and load.


(DVR should be registered first at DVR LIST)

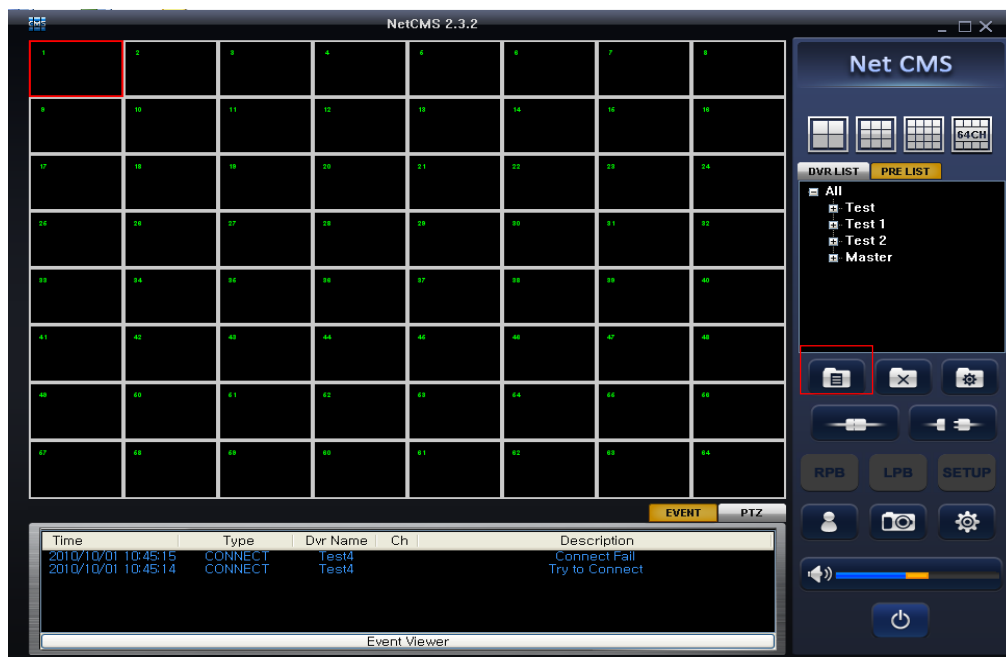
### 1-4-3-1. Making display List

To make the list to display the channel from more than one DVR, please make the display list.

- 1) Please click "PRE LIST" on window.
- 2) Please select the group on the list



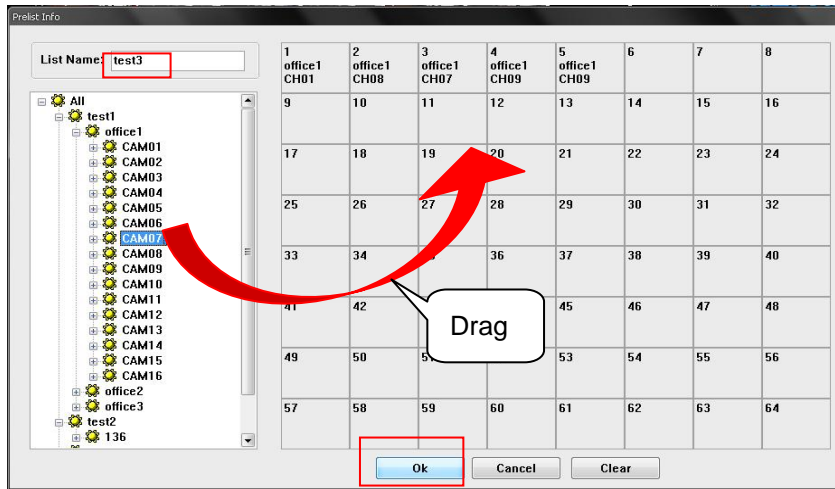
- 3) After Select desire group and click  button



4) Please select desire Group on the list Drag desire camera to display to right table.

5) Input desire list name and click OK button to save.

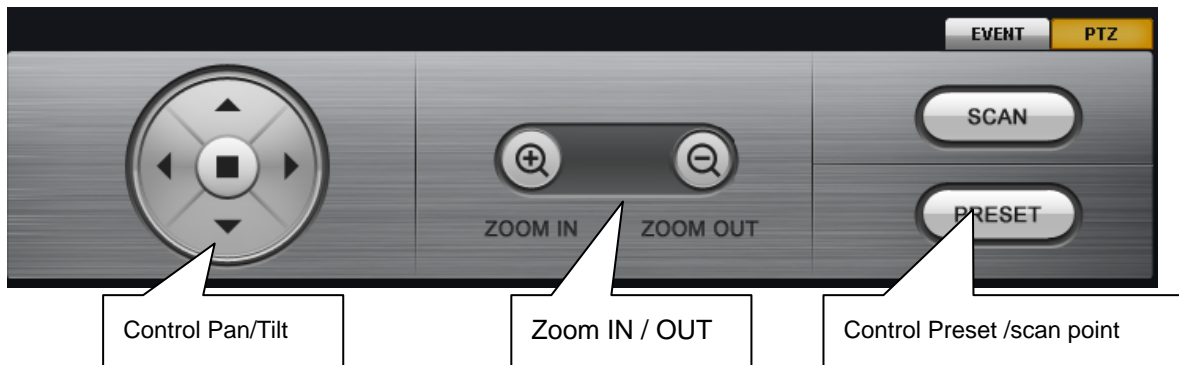
Ex ) test3



#### 1-4-4. PTZ control

It is the control function for the control PTZ camera on one channel mode.

If you click PTZ button, window will change to PTZ control mode.

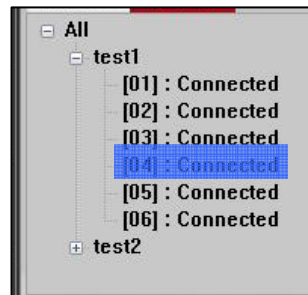


At DVR LIST : You can control PTZ after selecting the DVR of the PTZ camera.

At PRELIST : You can control PTZ after selecting the Camera.



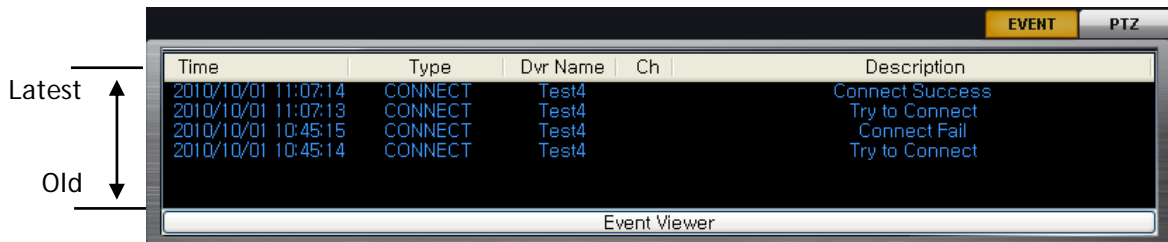
DVRLIST




PRELIST

1-4-5 Event status.

If you click event bar , connection status will be shown.



1-4-6. Create user

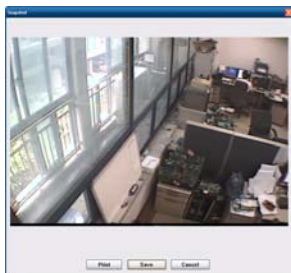
If you click  button, a window of user list will appear. You can manage users to access Client S/W by adding or deleting user.




- ADD : add user
- DEL : delete registered user
- CHG : change user ID or Password
- Default : Delete all registered users except for admin user

1-4-7. Snapshot

Select screen and click the snapshot button  to get a picture.

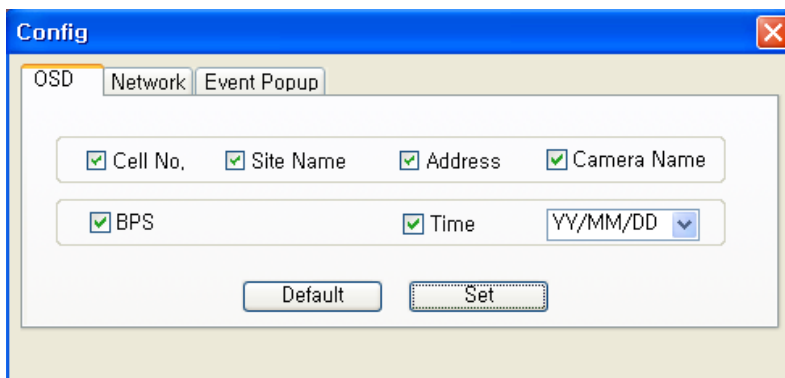


1-4-8. Config

If you click  button, the setup window will be shown as below.

1-4-8-1. OSD

You can select what you want to be shown in each channel as OSD.



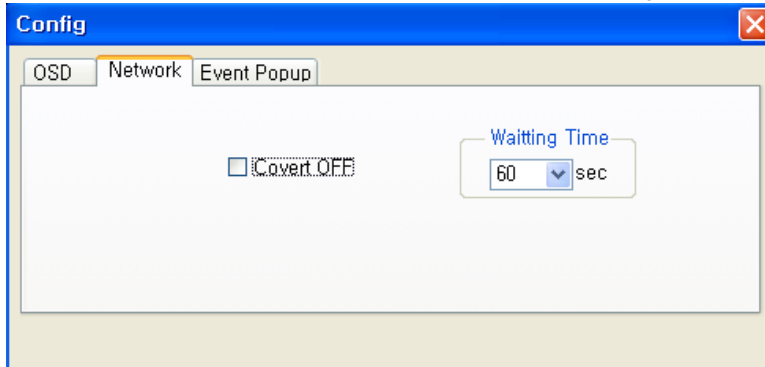
### 1-4-8-2. Network

1) This function indicates that video will be hidden or not in Live Display mode.

If you select 'Covert OFF', video will not be showed same as you set it in local DVR.

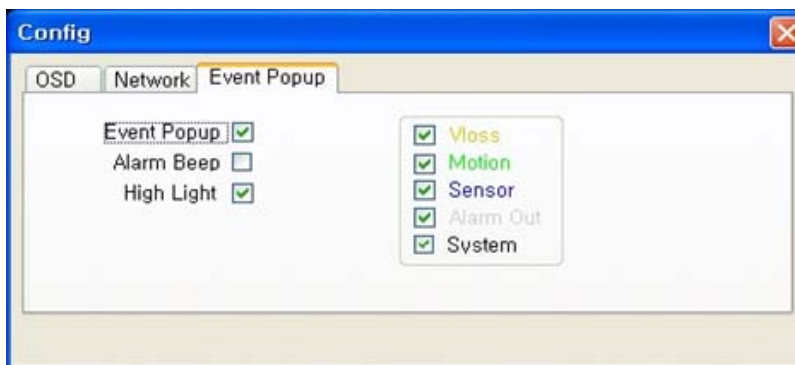
2) Waiting Time

Because of unstable network transmission, CMS will wait until the time what you set if CMS does not receive the data from DVR so, DVR will not give next data to CMS for this time you set.



### 1-4-8-3. Event Popup

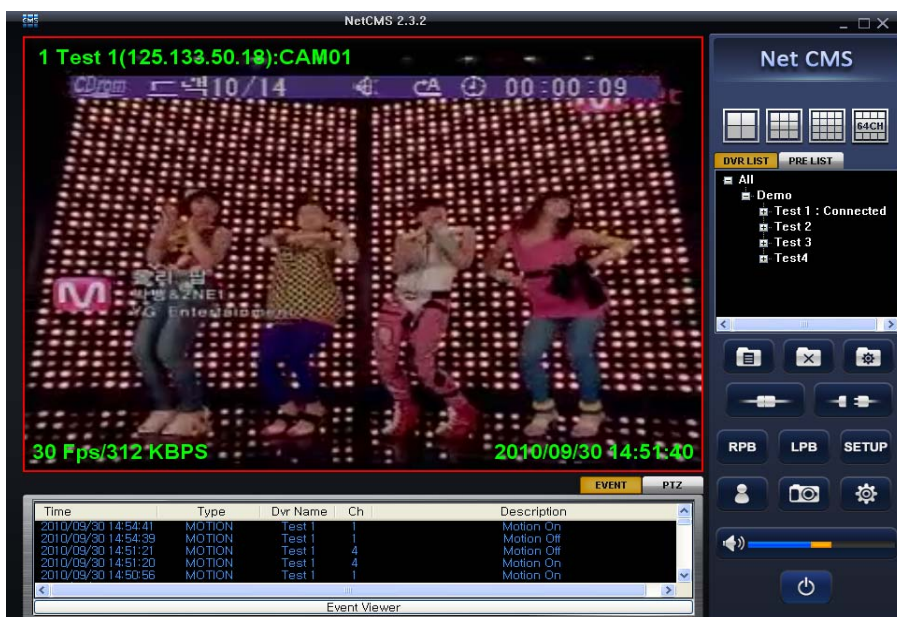
Event notification will be worked as 'Popup Video' 'Beep Sound' and 'High Light'.



1) Event Popup

When event triggered in local DVR, Video will be showed as full screen.

( DVR should be set on EVENT Mode first )

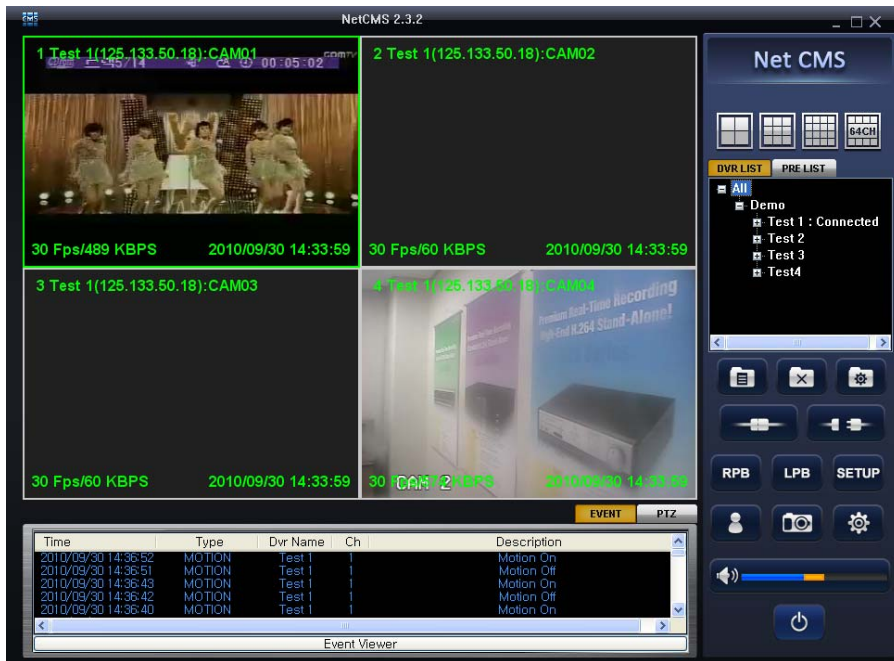


## 2) Alarm Beep

When Event triggered, it gives beep sound in CMS PC.

## 3) High Light

The channel had Event is shown with the color on the border for following events such as 'Video Loss', 'Motion Detected' and 'Sensor Activated'.



Vloss = Yellow  
Motion = Green  
Sensor = Blue

## - Alarm Out

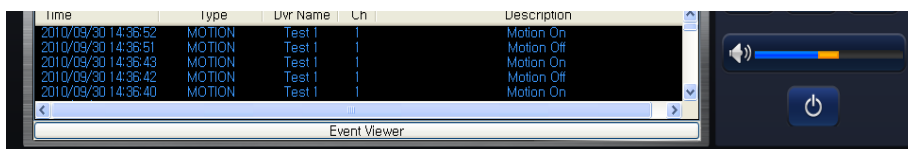
If you select Alarm out, CMS indicates it on Log window when Alarm out happens in DVR.

## - System

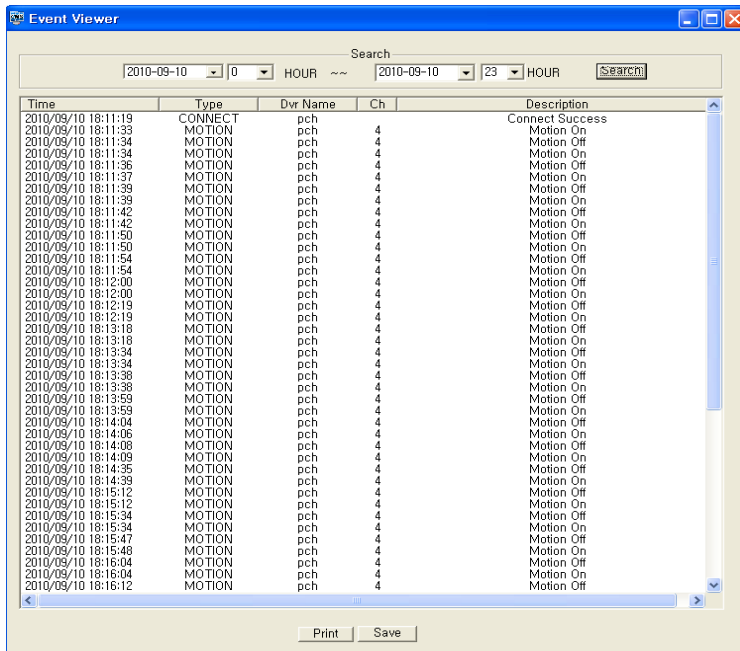
If you select System, CMS indicates it on Log window when HDD is failed in DVR.

## 4) Event Viewer

If you select the Event Viewer on the bottom of window, you can see the log information.




Event Viewer



- The log on the window will save on PC automatically.

#### 1-4-9. RPB( Remote Playback)


It is search function to playback recorded data in local DVR you connected from CMS.


- (1) Select DVR site what you wish listed in 'DVR LIST' tap of main screen of CMS.
- (2) Click  button to move to remote playback mode.
- (3) Select data and time(hour/minute).
- (4) Then, click play button to play.

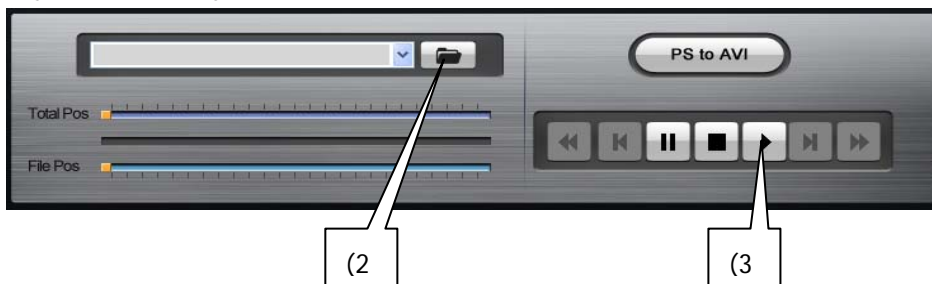


#### 1-4-10. LPB(Local Playback).

It is search function to playback recorded data in your CMS PC which you backup in Setup mode.

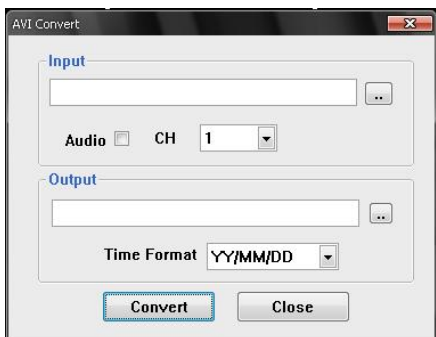
- (1) Click  button to move to backup player mode

- (2) Click  button to open backup file  
 \* You can select more than 1 file at same time.
- (3) Click play button to play



### 1-4-10-1. Change backup file to AVI file

The format of backup file can be converted to AVI file per each channel.  
 If you Click PS to AVI ICON, the AVI Convert window will be shown.



- Input** : Select backup file to convert to AVI
- If you want to convert with Audio, check in Audio box
- CH** : Select channel to convert
- Output** : Appoint directory and file name
- Time Format** : Select time stamp be shown
- Convert** : Start AVI convert

### 1-4-11. Remote Setup

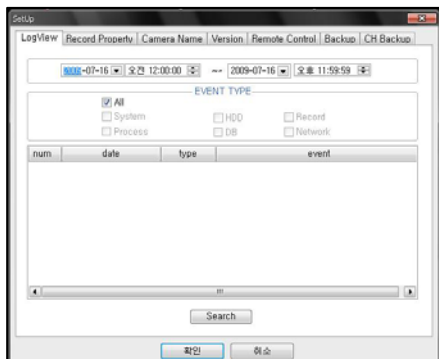
It is Setup function in your CMS PC.

Remote Setup will be worked as

; LogView / Record Property / Camera Name / Version / Remote Control / Backup / CH Backup

#### 1-4-11-1. Log view

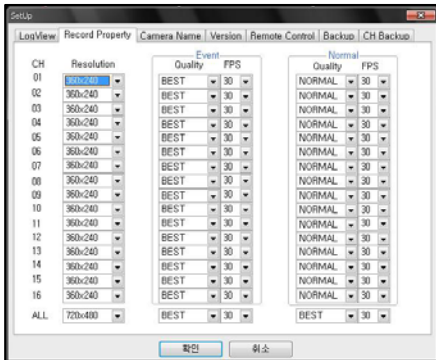
It is the search function for event information.



- (1) Select date & time to search event
- (2) Select desire event type
- (3) Click Search button

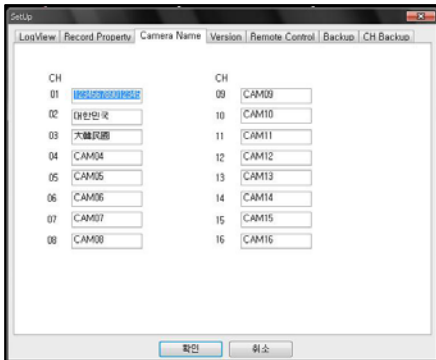
### 1-4-11-2. Record Property

It is setup function to set the frame rate in local DVR you connected from CMS.



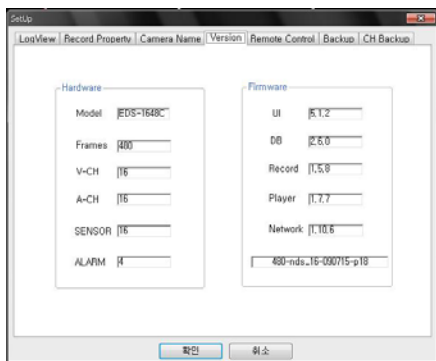
You can adjust resolution, Quality and frame rate to record.

### 1-4-11-3. Camera Name



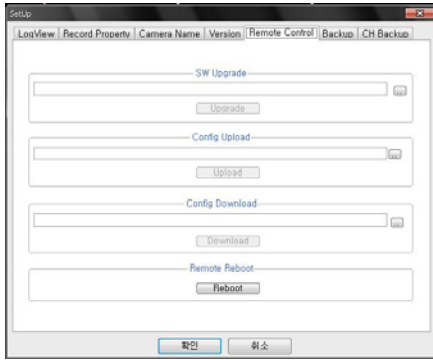
You can change camera name. DVR system is compatible with ANSI code. you can type by ANSI code.

### 1-4-11-4. Version



It indicates the system information

### 1-4-11-5. Remote control



SW upgrade : You can upgrade system

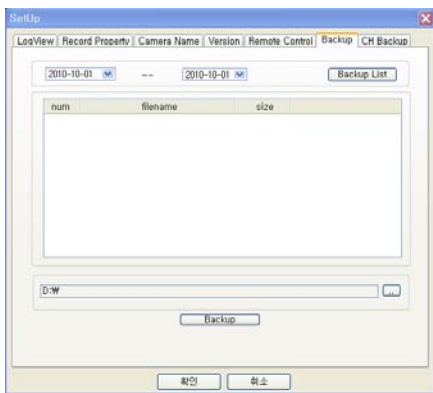
Config Upload : You can change config data to DVR

Config Download : You can get config data from DVR

Remote Reboot : You can reboot DVR.

### 1-4-11-6. Backup

It is backup function to playback recorded data in your CMS PC.



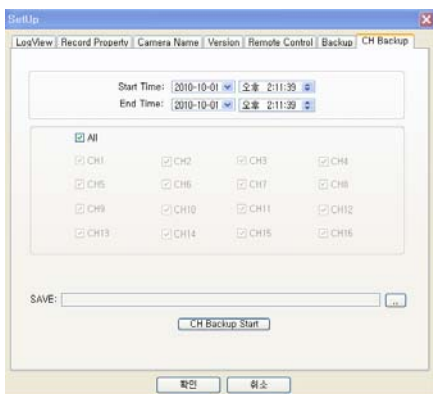
(1) Select backup date and click Backup list.

(2) Backup list in selected date will be shown.

(3) Appoint directory to save backup file and click Backup button to start backup.

### 1-4-11-7. CH backup

It is backup function to playback recorded data per channels you want.



You can backup specific channels with date / time.

**- Central Monitoring System Software-**